



HOW TO USE THE IMAGE BLOCK STRETCHER-LESS MOUNTING SYSTEM

Overview

The InkjetPro Image Block or iBlock is the fastest way to mount photo canvas without the need for glass or stretchers. You can also mount normal photographs.

Now you can have your canvas prints customer ready in only a few minutes with the products doubling as a glass free medium for displaying prints in the one handy package.

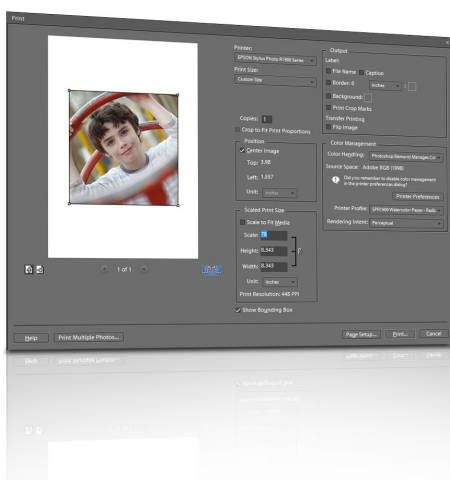
The iBlock is suitable for canvas production with A3+ or 17 desktop printers as the end result features a 42mm deep wooden frame resulting in minimal image loss. Unlike normal canvas stretchers there is seldom any need to extend the image for edge loss.

Even desktop printers like the inexpensive Epson R1900 can make stunning 12 by 18 inch InkjetPro iBlocks that sit comfortably on a desk or look classy on wall display.

InkjetPro iBlocks are available in Black, White and Walnut Brown. They are a bold 42mm deep and of sturdy construction with inbuilt hangers for portrait or landscape orientation. To complete construction all that is required is a sharp knife and some PVA glue. The acrylic cutting template is included with the first order.

GMS recommends the canvas print is liquid laminated to protect its surface.

1 STEP ONE: PRINTING THE IMAGE



Printing for iBlock is very simple, when using Photoshop or other programs that can print, all that is needed is to print the image about 8mm larger than the iBlock face in both directions. Since most of this 8mm is visible at the turn over edges almost 100% of the printed image is visible at all times.

It is important to leave some white unprinted canvas after the printed area in order to attach the canvas to the iBlock face. This amount can vary but approximately 1 cm is needed on each side as a minimum. Therefore the total image loss is approximately 2.5-3cm in total making the industry standard 12 by 18 inch size possible from a 13 inch desktop printer without image loss.

2 STEP TWO: PROTECT THE IMAGE



All canvas types, even the Satin Moab Anasazi need to be sealed with a protective over laminate. There is no exception even for chainstore printed solvent and UV cure canvas types.

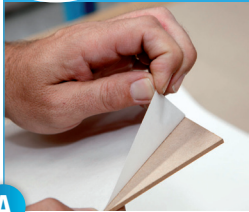
Moab's superb Desert Varnish provides an instant drying approach with the convenience of a pressure-pack can. Just hold the print about 20cm away from the can and give a light coating. Desert Varnish does not alter the surface sheen of the canvas when correctly sprayed and can be used over all types of inkjet product.

Since this spray is a rapid dry, it contains solvents, so spray in an area with good ventilation. As a superior option consider using the new InkjetPro GicléeShield II. This is a water based chemical that adds higher gloss and far greater protection to the canvas but takes between 10 to 60 minutes to dry.

GicléeShield II adds considerable color depth and flexibility to the canvas edges to avoid cracking. It also aids adhesion to the bond of the iBlock face to the frame.

If a photo is to be mounted instead of a canvas then only Moab Desert Varnish should be used.

3 STEP THREE: MOUNTING THE CANVAS



A When the canvas is dry gently remove the backing paper from the TOP side of the iBlock face taking care not to go too quickly and lift the glue from the board.



B Mark the corners of the image on the backside of the canvas so the iBlock face can be accurately located.



C Apply the iBlock face to the canvas image which is now face down on a flat surface. Turn the image over to check alignment and to smooth out any bubbles.

Helpful hint!

If you are using a photo paper print instead of a canvas proceed to trim the excess with a blade.

As an optional step consider blackening the iBlock edges with a chisel tipped Artline Xylene free marker.

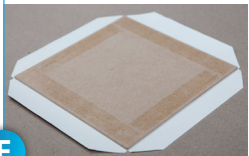
If you used Moab Desert Varnish the sharp leading edge of the iBlock face can cause canvas cracking. Consider removing the sharp surface with the box cutter or some light grade sandpaper. This is not usually required when using InkjetPro GicléeShield II as it features chemical flexibility agents to combat cracking.



D Using a box cutter and the acrylic template provided with the first iBlock that was sold to you, cut away from the iBlock face in the slots provided. Make sure you remove the triangular piece from the corners completely and make sure the knife or box cutter is sharp.



E Cut out the image completely leaving excess canvas between 1 and 3 cm in width.



F The iBlock face should then be inspected to make sure that the corners are correctly cut out and there are no canvas threads.

Helpful hint!

To get a better finished result apply two drops of PVA glue or GicléeShield to either side of the iBlock face corners to prevent any corner "bulge".

STANDARD INJETPRO IBLOCK SIZES

Size	Black	White	Walnut	Size	Black	White	Walnut
10 by 15cm	Yes	Yes	Yes	30 by 40cm	Yes	Yes	Yes
15 by 20cm	Yes	Yes	Yes	30 by 45cm	Yes	Yes	Yes
20 by 20cm	Yes	Yes	Yes	40 by 50cm	Yes	Yes	Yes
20 by 30cm	Yes	Yes	Yes	40 by 60cm	Yes	Yes	Yes
25 by 50cm	Yes	Yes	Yes	50 by 50cm	Yes	Yes	Yes
30 by 30cm	Yes	Yes	Yes	A4	Yes	Yes	Yes

Notes: Spare cutting template: Part Number #IBCUTTMP
Additional sizes and colors are available on request, minimum order quantities apply.



4 STEP FOUR: ATTACHING THE IBLOCK FACE TO THE FRAME



A SLOWLY lift the double sided tape from the back of the iBlock face making sure that it doesn't take the glue from the wooden surface.



B Now fold the canvas over from the centre of each side outwards. If you put some glue on the ends of each edge it will ooze out. Clean up with a clean damp cloth. The face of the iBlock is now ready to insert into the frame.

Helpful Hint!

Should the edge of the face show the canvas edges these can be spotted out with the Artline Xylene free markers .

5 STEP FIVE: PREPARING THE FRAME AND FINISHING



A Using a bottle of interior PVA glue simply squeeze out a thin bead of glue on the inside of the frame edge. Too much glue will result in dried glue being seen on the edges of the canvas.



B Place the iBlock face in the frame taking care to locate the face in such a way as the hanging holes are face up.

Tap down gently and center the face taking care to locate any excess glue and remove it with a damp cloth.

Allow a few minutes to dry at 20 degrees centigrade.

6 STEP SIX: PRESENTATION



Your iBlock is now ready to hang on the wall or sit on a desk. Unlike other stretcher-less canvas framing solutions it does not crop your image and take time in Adobe Photoshop to calculate wrap area loss. The frame is flat and can easily sit on a desk.

The images will have far better protection, deeper color and edge cracking protection if they were first prepared with GicléeShield II.



For an archival solution please refer to documentation for "The Giclée System" which features protection with Aquathane UV and conventional stretcher bars.



DISTRIBUTED BY GICLÉE MEDIA SUPPLIES
ADDRESS: 2 / 13-15 Kevlar Close, Braeside VIC 3195 | PHONE : 1300 Giclée (1300 442533) | FAX: +61 3 9589 7236 | EMAIL: info@gicléemedia.com.au

www.gicléemedia.com.au